

Appendices

Contents

Accredited Operators of Railways in NSW.....	115
Charter and Aims.....	116
ITSRR's Principal Officers.....	116
About ITSRR's Advisory Board.....	116
Significant Committees.....	119
Grants to Non-Government Organisations.....	119
Legal Changes.....	119
Major Works in Progress.....	119
Electronic Service Delivery.....	119
Equal Employment Opportunity.....	120
Human Resources.....	119
Consultants.....	121
Action Plan for Women.....	121
Land Disposal.....	121
List of Major Assets.....	121
Economic or other Factors.....	121
Publications.....	121
Overseas Visits.....	122
Payment of Accounts.....	122
Risk Management and Insurance Activities.....	123
Disclosure of Controlled Entities.....	123
Ethnic Affairs Priorities Statement.....	123
Occupational Health and Safety.....	124
Waste Management.....	124
Code of Conduct.....	124
Annual Report External Costs.....	124
Performance and Number of Executive Officers.....	124
Freedom of Information.....	128
Privacy Management Plan.....	128
Principal Legislation Administered by ITSRR.....	128
Government Energy Management Policy.....	128
Credit Card Certification.....	128
Response to Significant Issues Raised by the Auditor-General.....	128
Exemptions to reporting obligations.....	128

Accredited Operators of Railways in NSW

The code after the name of each railway is used as part of the unique alphanumeric identifier for Certificates of Competency to be issued by the accredited railways.

Guidelines for the Certification of Competency can be viewed at the ITSRR Website.

3801 Limited	3801	Millennium Parklands Railway	MPR
Airport Link Pty Ltd	AL	New England Railway Inc	NER
Alstom Australia Ltd	AAT	NSW Rail Transport Museum	RTM
Australia Southern Railroad	ASR	OneSteel Manufacturing	OSM
Australian Rail Track Corporation	ARTC	Pacific National Pty Ltd	PN
Australian Railway Historical Society (ACT Div)	ARHS	Pacific Rail Engineering Pty Ltd	PRE
AW Edwards Pty Ltd	AWE	Parramatta Rail Link Co Pty Ltd	PRL
Barclay Mowlem Construction Limited	BMCL	Patrick Rail Operations Pty Ltd	PRO
Bishop Austrans Pty Ltd	BAP	Perisher Blue Pty Ltd	PBP
Blue Circle Southern Cement	BCSC	Powerhouse Museum	PHM
Blue Scope Steel (AIS) Pty Ltd	BSS	Queensland Rail	QR
Bradken Rail Mittagong	BRM	Rail Fleet Services Limited	RFS
Campbelltown Steam Museum	CSM	Rail Infrastructure Corporation	RIC
Chicago Freight Car Leasing Australia Pty Ltd	CFCL	RailCorp	RC
Connex Sydney Pty Ltd – Light Rail	CONL	Rail Industry Service Providers Holdings	RISP
Connex Sydney Pty Ltd – Monorail	CONM	Regional Heritage Transport Association, Junee	RHTA
Cooma-Monaro Railway Inc	CMR	Richmond Vale Railway Museum	RVR
CRT Rail Operations Pty Ltd	CRT	South Maitland Railways Pty Ltd	SMR
Dorrigo Steam Railway & Museum Limited	DSRM	South Spur Rail Services Pty Ltd	SSRS
EDI Rail Pty Ltd	EDI	Southern Shorthaul Railroad	SSR
Fluor Australia Pty Ltd	FAP	Speno Rail Maintenance Australia Pty Ltd	SRMA
Glenreagh Mountain Railway Inc	GMR	Sydney Tramway Museum	STM
Goulburn Crookwell Heritage Railway Inc	GCHR	Taylor Rail Track Pty Ltd	TRT
GrainCorp Operations Ltd	GOL	The Rail Motor Society Inc	RMS
Great Southern Railway Ltd	GSR	The Silverton Tramway Company Ltd	STC
Heggies Bulkhaul Ltd	HBH	Thiess Hochtief Joint Venture	THJV
Historic Electric Traction	HET	Timbertown Heritage Steam Railway Pty Ltd	THSR
Illawarra Light Railway Museum Society Ltd	ILR	Transfield Services Australia	TSA
Interail Australia	INT	United Goninan Ltd	UG
John Holland Pty Ltd	JH	V/Line Passenger Pty Ltd	VLP
Junee Railway Workshops Pty Ltd	JRW	Valley Heights Steam Tramway	VHST
Lachlan Valley Rail Freight	LVRF	Westinghouse Signals Australia	WSA
Lachlan Valley Railway Society Co-op Ltd	LVR	Works Infrastructure Pty Ltd	WIP
Heritage Park and State Mine Railway	SMHP	Zig Zag Railway Co-op Ltd	ZZR
Manildra Group	MG		
Melaleuca Station	MES		

ITSRR's Charter and Aims

The principal objective of ITSRR is to facilitate the safe operation of transport services in the State.

ITSRR also has the following objectives:

- to exhibit independence, rigour and excellence in carrying out its regulatory and investigative functions;
- to promote safety and reliability as fundamental objectives in the delivery of transport services.

ITSRR's Principal Officers

ITSRR's principal officers during 2004-05, comprising its Executive Management Team, were as follows:

Chief Executive Carolyn Walsh
BEc

Chief Investigator Paul O'Sullivan
MBA, MA

Executive Director, Corporate Strategy Natalie Pelham MScSoc

Director, Business Services Paul Harris BCom

Executive Director, Service Reliability Simon Foster GradDip-Mangt and a Land and Engineering Survey Drafting Certificate

Executive Director, Transport Safety Regulation Kent Donaldson BEc, BSc (Aviation), BSc(Engineering)

About ITSRR's Advisory Board

Role and Function

The principal functions of the Independent Transport Safety and Reliability Advisory Board are set out in the *Transport Administration Act 1988* and include:

- advising ITSRR and or making recommendations to ITSRR on safety and reliability;
- advising ITSRR on reports prepared by ITSRR and any other matter ITSRR may refer to the Board; and
- advising the Minister and or making recommendations on the safe operation of transport services (including safety regulation by transport authorities) and the reliability of publicly funded transport services.

Method and Terms of Appointment of Board Members

The Board consists of five members:

- a Chairperson appointed by the Governor, on the Minister's recommendation;
- three members appointed by the Minister (the appointed members); and
- the Chief Executive, ITSRR.

The members are appointed by the Minister and must have experience in one or more of the following:

- rail safety management systems;
- safety science;

- customer service;
- accident investigation;
- public administration.

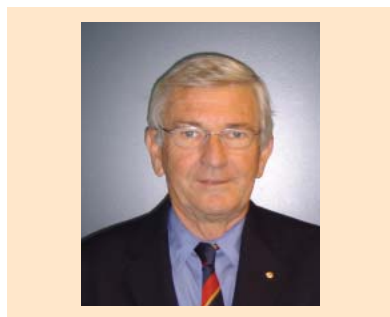
The Chairperson must have experience in transport safety management systems (including rail safety management systems). The Minister is to consult with the Chairperson before appointing Board members.

Mr Ron Christie is the current Chairperson of the Board and was appointed for a period of five years from 16 December 2003. The three appointed members were selected after carefully considering the skills, expertise, international reputation and pre-eminence of a range of nominees, and potential conflicts of interest and the extent of any potential conflict. These members were appointed for a period of three years from 16 December 2003.

Meetings

The Board meets monthly, unless additional or extraordinary meetings are considered necessary. During 2004-05, it held 12 meetings. There were no changes in Board membership in 2004-05.

Members of the Advisory Board

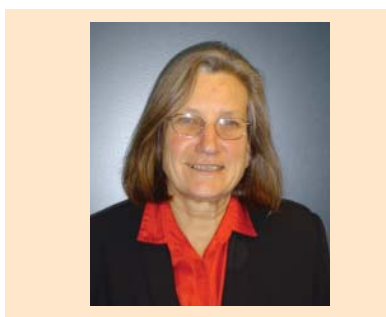


Ron Christie AM (BE, FIEAust, ASTC, FAIM) – Chairman

Ron Christie has had extensive experience as a Chief Executive with a long history of involvement in public transport. Mr Christie has held a number of senior positions which include Chief Executive of the Roads and Traffic Authority (RTA), Chief Executive of the Olympic Roads and Transport Authority (ORTA), and Coordinator General of Rail.

While at ORTA, Mr Christie was responsible for co-ordinating the input of all public transport providers in NSW, including the RTA, the SRA, Government and private bus operators, ferry operators and volunteer car drivers to provide for the transport needs of the Olympic and Paralympic Games. As Coordinator General of Rail, Mr Christie was responsible for the co-ordination of three rail entities, making recommendations to Government for changes to the organisational structure of the rail industry in NSW, including funding requirements.

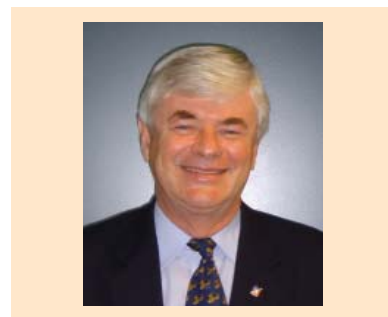
A strategic plan for the maintenance sectorisation and expansion of the rail system was provided to the Government by Mr Christie in 2001.



Professor Jean Cross (BSc, PhD, FIEAust, MAIP)

Jean Cross is Head of the UNSW's School of Safety Sciences and is involved in teaching and research in the area of risk management. Professor Cross has a degree and PhD in Physics gained in the UK. She is a Fellow of the Institute of Engineers Australia and a member of the Risk Management Institute of Australia.

Professor Cross is Chair of the Australian Standards Committee, which prepared the Australian/New Zealand Standard No. 4360 Risk Management and is a member of the International Standards Committee, which prepared an IEC standard on Project Risk Management. She has participated in the preparation of Australian Standards handbooks on environmental risk management, and risk management in outsourcing.

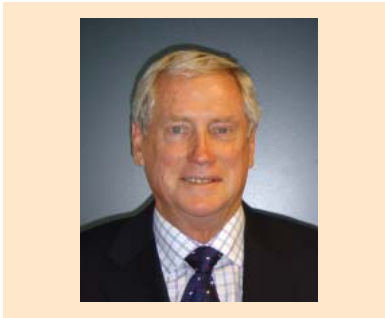


Dr Robert Lee (BA(Hons), PhD, FRAeS, FCILT)

Rob Lee has extensive experience in air safety investigation and is regarded as one of the foremost authorities on human factors in safety management. Dr Lee was appointed by the Bureau of Air Safety Investigation (BASI) as their first human factors specialist. In 1989 he was appointed Director of BASI. Under Dr Lee's leadership, BASI fundamentally changed the manner in which aircraft accidents and incidents were investigated and analysed in Australia, particularly through the application of advanced human factors and systems safety concepts.

Dr Lee is now an international consultant in human factors and systems safety in aviation, rail and other high technology industries. His recent airline clients have included Cathay Pacific, Emirates and Qantas. He has also worked with State Rail in introducing human factors and systems safety concepts to rail operations and training.

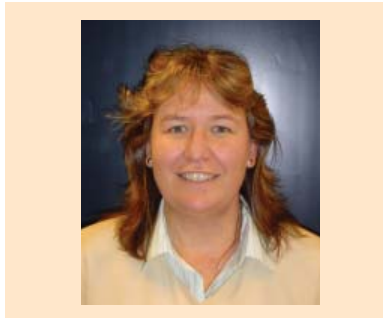
Members of the Advisory Board cont...



**Rob Schwarzer (BE(Civil),
FIEAust, Churchill Fellow)**

Rob Schwarzer is GHD's Business Development Manager responsible for the company's services to the Railway industry. A civil engineer, he has over 36-year's experience in the Transport industry covering freight and passenger services.

Mr Schwarzer has worked with government-owned rail, bus and ferry services and headed the private sector Sydney Light Rail Company. He has extensive experience in construction, operation and strategic planning for transport systems in both public and private ownership.



Carolyn Walsh (BEc)

Carolyn Walsh, Chief Executive of ITSRR is also a member of the Board.

Significant Committees

Transport Regulators Executive Committee (TREC)

TREC comprises the Chief Executives of the three agencies responsible for regulating the safety of public passenger transport, ITSRR, the Ministry of Transport and NSW Maritime. It is chaired by the Chairman of the ITSRR Advisory Board.

Its role is to act as a mechanism to share information, with the objective of identifying issues that require resolution across all three transport modes. This ensures that each agency understands the commonalities and differences between their approaches to safety regulation.

Grants to Non-Government Organisations

There were no grants to non-government organisations.

Legal Changes

Legal changes to Regulations:

- Rail Safety (General) Amendment (Miscellaneous) Regulation made on 14 January 2005

Legal changes to Acts:

- Transport Legislation Amendment (Waterfall Rail Inquiry Recommendations) Act Assented to on 27 June 2005, substantially commenced on 1 July 2005

Departures from Subordinate Legislation

There were no departures from the Subordinate Legislation Act.

Major Works in Progress

ITSRR is undertaking major information systems development work to improve the effectiveness of its safety data. A capital grant of \$390,000 was allocated during the

year for this purpose.

Electronic Service Delivery

The Electronic Self Service Kiosk is now operational. It allows staff to apply for leave online and receive electronic approval notices by email. Staff can also view leave balances and entitlements online as well as allow managers immediate access to staff leave balances.

Human Resources Number of staff by category											
Level	Total staff 2004	Total staff 2004/05	Respondents	Men	Women	Aboriginal People & Torres Strait Islanders	Minority Groups	People from Racial, Ethnic, EthnoReligious	Child was not English	People Whose Language First Spoken as a Disability	People with a Disability Adjustment
< \$31,352			0	0	0	0	0	0	0	0	0
\$31,352 - \$41,177			0	0	0	0	0	0	0	0	0
\$41,178 - \$46,035	1		0	0	0	0	0	0	0	0	0
\$46,036 - \$58,253		7	1	2	5	0	1	1	0	0	
\$58,254 - \$75,331	9	6	4	0	6	0	0	1	1	0	
\$75,332 - \$94,165	23	25	17	19	6	0	3	3	0	0	
> \$94,165 (non SES)	24	36	19	26	10	0	2	2	3	1	
> \$94,165 (SES)	7	8	5	4	4	0	1	1	1	1	
TOTAL	64	82	46	51	31	0	7	8	5	2	

Trends in the Representation of EEO Groups			
EEO Group	Benchmark or Target	2004	2005
Women	50%	34%	38%
Aboriginal people and Torres Strait Islanders	2%		-
People whose first language was not English	20%	15%	22%
People with a disability	12%	15%	11%
People with a disability requiring work-related adjustment	7%	5.9%	4.3%

Trends in the Distribution of EEO Groups			
EEO Group	Benchmark or Target	2004	2005
Women	100	91	91
Aboriginal and Torres Strait Islanders peoples	100		-
People whose first language was not English	100	n/a	n/a
People with a disability	100	n/a	n/a
People with a disability requiring work-related adjustment	100	n/a	n/a

Notes:

- 1) Staff numbers are as at 30 June 2005
- 2) Excludes casual staff
- 3) A distribution index of 100 indicates that the centre of the distribution of the EEO group across salary levels is equivalent to that of other staff. Values less than 100 mean that the EEO group tends to be more concentrated at lower salary levels than is the case for other staff. The more pronounced this tendency is, the lower the index will be. In some cases the index may be more than 100, indicating that the EEO group is less concentrated at lower salary levels. The Distribution Index is automatically calculated by the software provided by ODEOPE.
- 4) The distribution index is not calculated where EEO group or non-EEO group numbers are less than 20.

Consultants

ITSRR did not engage any consultants during the year.

Action Plan for Women

ITSRR is not required to prepare an action plan for women.

Land Disposal

ITSRR does not have any land to dispose of.

List of Major Assets

ITSRR has no major assets to report against.

Economic or other factors

There were no economic or other factors affecting ITSRR's operational objectives in 2004-05.

Publications

During the year ITSRR published the following documents:

- *Survey of CityRail Customers*, January 2005
- *Annual Report 2003-2004*, October 2004
- *Implementation of the NSW's Government Response to the final report of the Special Commission of Inquiry into the Waterfall Accident*, January – March 2005
- *Transport Advisory Weekly (TAW) Electronic News Service* – June 2005

- *Train Door Emergency Egress and Access and Emergency Evacuation Procedures*, November 2004

In addition, the Office of Transport Safety Investigations finalised and published the following reports:

- Rail Safety Investigation Report, Unanderra Derailment, July 2004
- Rail Safety Investigation Report, Yass Junction Derailment, July 2004
- Rail Safety Investigation Report, Baan Baa Level Crossing Fatality, February 2005
- Rail Safety Investigation Report, Port Botany Shunting Fatality, June 2005
- Bus Safety Investigation Report, Gosford Red Bus Service, December 2004
- Bus Safety Investigation Report, Smithfield (Woodpark) Collision, February 2005
- Ferry Safety Investigation Report, *Louise Sauvage* Collision, June 2005

Overseas trips 2004-2005				
Dates	Destination	Attendees	Purpose	Cost \$
5/04/05 to 8/04/05	Wellington NZ	Carolyn Walsh	Attended 2 Steering Committee meetings: (1) Standing Committee on Transport and (2)Transport Agency Chief Executives	3,713
5/04/05 to 8/04/05	Wellington NZ	Philip Halton	Attended 2 Steering Committee meetings: (1) Standing Committee on Transport and (2)Transport Agency Chief Executives	2,008
8/02/05 to 9/02/05	Christchurch NZ	Kent Donaldson	Attended Rail Safety Regulators Panel meeting	2,095
8/02/05 to 9/02/05	Christchurch NZ	Philip Halton	Attended Rail Safety Regulators Panel meeting	2,175
28/11/04 to 5/12/04	London UK	Wayne Richards	Attended 2nd International Confidential Reporting Systems Forum	9,410
			TOTAL	19,401

Payment of Accounts					
Aged analysis at the end of each quarter					
Quarter	Current (Within due date) \$'000	Between 30 and 60 days overdue \$'000	Between 30 and 60 days overdue \$'000	Between 60 Days and 90 days overdue \$'000	More than 90 days overdue \$'000
September	66	-	-	-	-
December	150	-	-	-	-
March	61	-	-	-	-
June	191	-	-	-	-

Time for Payment of Accounts

Accounts paid on time within each quarter

Total Accounts Paid on Time				Total Amount Paid	
	Target %	Actual %	\$000	\$000	
September	100	74	1,419	1,920	
December	100	68	1,184	1,740	
March	100	85	1,906	2,245	
June	100	96	1,008	1,096	
TOTAL					\$7,001

Risk Management and Insurance Activities

ITSRR has revisited its risk management framework to ensure appropriateness for the organisational structure. ITSRR has maintained accounts with the Treasury Management Fund for all insurance.

Disclosure of Controlled Entities

ITSRR does not have any controlled entities to report against.

Ethnic Affairs Priorities Statement (EAPS)

ITSRR developed its Ethnic Affairs Priorities Statement highlighting specific actions and behavioural expectations.

During the year ITSRR EAPS achievements included:

- formalisation in policy of the requirement for all staff to recognise and respect

individual and cultural differences amongst other staff, the rest of the public sector and the community in general. In doing so to value diversity of thought, experience and skills;

- including in the survey of public rail transport customers strategies to ensure ethnic groups were represented and survey information could be collected in the preferred language of the survey participants;
- including EAPS awareness as an essential requirement in all position descriptions; and
- including in the ITSRR Work Hours Policy the need for Managers to accommodate flexible work arrangements that support the freedom of individuals to express their language, religious and cultural beliefs.

Future activities planned include:

- ensuring interpreter services can be accessed if needed when ITSRR is undertaking compliance inspections and investigations that require collaboration or collection of evidence through communication with clients or the general public;
- providing information on our website on assistance available to meet the needs of culturally and linguistically diverse backgrounds;
- continuing to ensure that surveys of the public focus on ethnic group representation and collection of survey information in the preferred language of the participant.

Timeframes for completion vary but budget and staff has been allocated to complete these initiatives.

Occupational Health and Safety

In conformormity with the *OHS Act 2002*, ITSRR has formed an OHS Consultative Committee consisting of three elected staff representatives and three management nominees. The Committee's role is to facilitate a safe work environment for ITSRR staff. It receives advice from staff and other sources on potential hazards in the workplace and works with staff and management to develop controls to reduce risks to 'as-low-as-reasonably-practical'. ITSRR is acutely aware of the need for safe working practices, especially in regard to its considerable field activities.

Waste Management

ITSRR has developed a waste management strategy that provides for recycling of used goods, use of recycled paper and photocopy cartridges and reductions in paper use.

Code of Conduct and Ethics

A copy of the Code is provided to all ITSRR staff on its Intranet service, and outlined to staff on induction. No changes were made to the code during the year.

Annual Report External Costs

The external cost of ITSRR's annual report was \$5067.00. It comprised costs relating to an external proof-reader, printing and preparation of CD's.

Performance & Number of Executive Officers

Number of SES Officers				
SES LEVEL	No. of SES Offices (total) 2004	No. of SES Offices (total) 2005	No. of Officers 2005	No. of Female staff in SES 2005
1	-	-	-	-
2	1	1	1	1
3	2	1	1	1
4	2	2	1	1
5	2	2	0	0
6	1	1	1	1
Total	8	7	4	4

Statement of Performance and Pay for SES Officers Level 5 and Above

ITSRR

Name:	Carolyn Walsh
Title:	Chief Executive
Remuneration:	\$225,000
Level:	SES Level 6
Performance Pay:	Nil

Performance Achievements:

Successfully managed the functions of the Independent Transport Safety and Reliability Regulator, including the safety regulation of rail transport in NSW, the coordination of strategic safety issues across transport modes (rail, bus and ferry), and the provision of advice to Government on the reliability of publicly funded transport services.

The 2004-05 financial year saw a consolidation of ITSRR's business development as a new agency.

Major achievements during the period included:

- provision of advice to Government on its response to the Special Commission of Inquiry into the Waterfall Rail Accident;
- a comprehensive review of transport safety legislation in light of the recommendations of the Waterfall Inquiry, which resulted in the enactment of the *Transport Legislation Amendment (Waterfall Rail Inquiry Recommendations) Act 2005*;
- development of a verification and reporting framework for the implementation of the Waterfall Inquiry recommendations;
- introduction of new standards in rail safety, including elements required of an operator's Safety Management System and Medical Health Assessments;
- leadership in the development of National Model Legislation by chairing the National Rail Safety Package Steering Committee;
- publication of the first independent *Survey of CityRail Customers*;
- a major recruitment initiative resulting in over 90% staffing against establishment;
- development of a Corporate Management System Framework (supported by new IT and records management systems) to ensure the quality of ITSRR's business planning, policy development and service delivery; and
- management of ITSRR's finances (net cost of service expenditure) to within 0.3% of budget.

ITSRR

Name:	Kent Donaldson
Title:	Executive Director, Transport Safety Regulation
Remuneration:	\$210,000
Level:	SES Level 5
Performance Pay:	Nil

Performance Achievements:

Successfully managed the Transport Safety Regulation Division covering accreditation of rail operators and actioning of audit and compliance activities to maintain and promote safe operations. Safe rail operations were also promoted through policies and guidelines covering specific aspects of rail safety operations.

Major achievements included:

- development of the National Accreditation Package which covers accreditation requirements, guidelines for management of change and a national audit protocol;
- managed the implementation of recommendations from the Special Commission of Inquiry into the Waterfall Accident including establishing a framework to prioritise, implement and monitor progress of adopting accepted recommendations;
- facilitated introduction of the national classification system (ONS1) for reporting of safety incidents and accidents by operators;
- Improved safety data integrity for use in analysis of safety performance.;
- developed and implemented policies and guidelines for:
 - drug and alcohol testing.
 - employee health assessments.
 - fatigue management;
- conducted the Rail Network Vulnerability Analysis to identify industry risks and hazard management strategies;
- managed accreditation assessment of a number of operators including ARTC and Queensland Rail.
- oversaw implementation of enhanced compliance auditing of rail operators.
- managed implementation of statutory enforcement measures.

OTSI

Name:	Paul O'Sullivan
Title:	Chief Investigator, Office of Transport Safety Investigations
Remuneration:	\$218,280
Level:	SES Level 5
Performance Pay:	Nil

Performance Achievements:

Successfully managed the functions of the Office of Transport Safety Investigations, including the investigation of serious rail, bus and ferry accidents and incidents; review of operator investigation reports; provision of an industry safety service through the Confidential Safety Information Reporting Scheme and analysis of events in other jurisdictions to determine relevant safety trends.

The Chief Investigator reported directly to the Chairperson of the Independent Transport and Reliability Advisory Board. From the beginning of 2005 – 06, the Chief Investigator will report directly to the Minister for Transport.

Specific achievements include:

- provided a 24-hour reporting service for the notification of safety critical accidents and incidents;
- published a daily summary of incidents notified to OTSI through the incident reporting system and the immediate action taken;
- received and reviewed "72-hour" incident reports from rail, bus and ferry operators as a follow-up to notified accidents and incidents;
- responded to and initiated 11 OTSI investigations into serious rail, bus and ferry accidents and incidents;
- reviewed 79 rail operator investigation reports and a further 149 reports which had been submitted to the former Transport Safety Bureau dating back to 2000;
- provided the Minister for Transport with monthly statutory reports on those operator investigations reviewed by OTSI;
- submitted seven OTSI investigation reports to the Minister for Transport for tabling in Parliament;
- received 72 reports through the Confidential Safety Information Reporting Scheme and issued 41 Safety Valve Notices;
- completed the recruiting of investigators to bring the office to full authorised establishment;
- implemented an induction and training program for all staff; and
- continued the development and population of the Accident Investigation Management Database;
- contributed to the review of the Waterfall Special Commission of Inquiry recommendations and preparation of the amendments to the relevant transport legislation.

Freedom of Information

There were no freedom of information requests in 2004-05.

Privacy Management Plan

ITSRR has developed a comprehensive Privacy Management Plan which is available to staff on the intranet.

Principal Legislation Administered by ITSRR

ITSRR exercises functions under the:

- *Rail Safety Act 2002* and Regulations made under that Act;
- *Passenger Transport Act 1990*;
- *Transport Administration Act 1988*.

Government Energy Management Policy

ITSRR's energy use was audited and awarded a 5-star rating.

Credit Card Certification

The Chief Executive has certified that the use of credit cards was in accordance with Premier's Memorandum and Treasurer's Directions.

Response to Significant Issues Raised by the Auditor-General

No issues for ITSRR action were raised by the Auditor-General during 2004-05

Exemptions to reporting obligations

ITSRR does not require any reporting exemptions.

Acronyms

ITSRR	Independent Transport Safety and Reliability Regulator
NTC	National Transport Commission
ATC	Australian Transport Council
SMS	Safety Management System
OTR	On-time running (of rail services)
SCOI	Special Commission of Inquiry
CSIRS	Confidential Safety Information Reporting Scheme

Index

Accounts Payable Performance.....	123
Accredited Operators of Railways in NSW.....	115
Advisory Board Chairman’s Report.....	5
Action Plan for Women.....	121
Advisory Board.....	17, 116
Annual Report External Costs.....	124
Appendices.....	114
Auditor-General’s Report.....	90
Business Services Division.....	28
Charter and Aims.....	116
Chief Executive’s Report.....	3
Code of Conduct.....	124
Consultants.....	121
Contact Details.....	131
Controlled Entities.....	123
Corporate Plan 04-05, 05-06.....	18,21
Corporate Strategy Division.....	27
Credit Card Certification.....	128
Electronic Service Delivery.....	119
Equal Employment Opportunity.....	120
Ethnic Affairs Priorities Statement.....	123
Exemptions to Reporting Obligations.....	128
Executive Management.....	15,116
Financial Statements.....	93
Freedom of Information.....	128
Goals.....	21
Governance and Management.....	11
Government Energy Management Policy.....	128
Grants to Non-Government Organisations.....	119
Highlights and challenges.....	7
Human Resources.....	119
Industry Overview.....	32

Index cont...

Key Functions.....	19
Land Disposal.....	121
Legal Changes.....	119
Letter to Minister.....	1
List of Major Assets.....	121
Major Works in Progress.....	119
Management and Structure.....	15,20
Notes to Financial Statements.....	98
Occupational Health and Safety.....	124
Office of Transport Safety Investigations (OTSI).....	30
Overseas Travel.....	122
Performance and Number of Executive Officers.....	124
Principal Legislation Administered by ITSRR.....	128
Privacy Management Plan.....	128
Publications.....	121
Rail Industry Safety Report 2004-05.....	38
Response to Significant Issues.....	128
Risk Management and Insurance.....	12,123
Service Reliability Division.....	26
Significant Committees.....	119
Staff by Equal Employment Opportunity category.....	119
Statement of Cash Flows.....	95
Statement of Financial Compliance.....	96
Statement of Financial Performance.....	93
Statement of Financial Position.....	94
Statement of Values.....	21
Structure.....	20
Time for Payment of Accounts.....	122
Transport Safety Regulation Division.....	22
Transport Reliability Report 2004-05.....	64
Waste Management.....	124
Year in Review.....	9

Contact Details

Independent Transport Safety and Reliability Regulator

contact@transportregulator.nsw.gov.au

PO Box A2633

Sydney South NSW 1235

Lvl 22, 201 Elizabeth Street

Sydney NSW 2000

Phone: 02 8263 7100

Fax: 02 8263 7200

www.transportregulator.nsw.gov.au

Office of Transport Safety Investigations (OTSI)

PO Box A2633 Sydney South

NSW 1235

Level 22, 201 Elizabeth Street

Sydney NSW 2001

info@otsi.nsw.gov.au

Telephone: 02 8263 7100

Facsimile: 02 8263 7299

www.otsi.nsw.gov.au

Confidential Safety Information Reporting Scheme (CSIRS)

PO Box A2616

Sydney South NSW 1235

Email: csirs@otsi.nsw.gov.au

Telephone: 1800 180 828

Facsimile: 1800 180 528

ITSRR's hours of business are 8.30am to 5.30pm Monday to Friday (except public holidays).

The Office of Transport Safety Investigations and the Confidential Safety Information Reporting Scheme operate on a 24-hour basis, every day.