



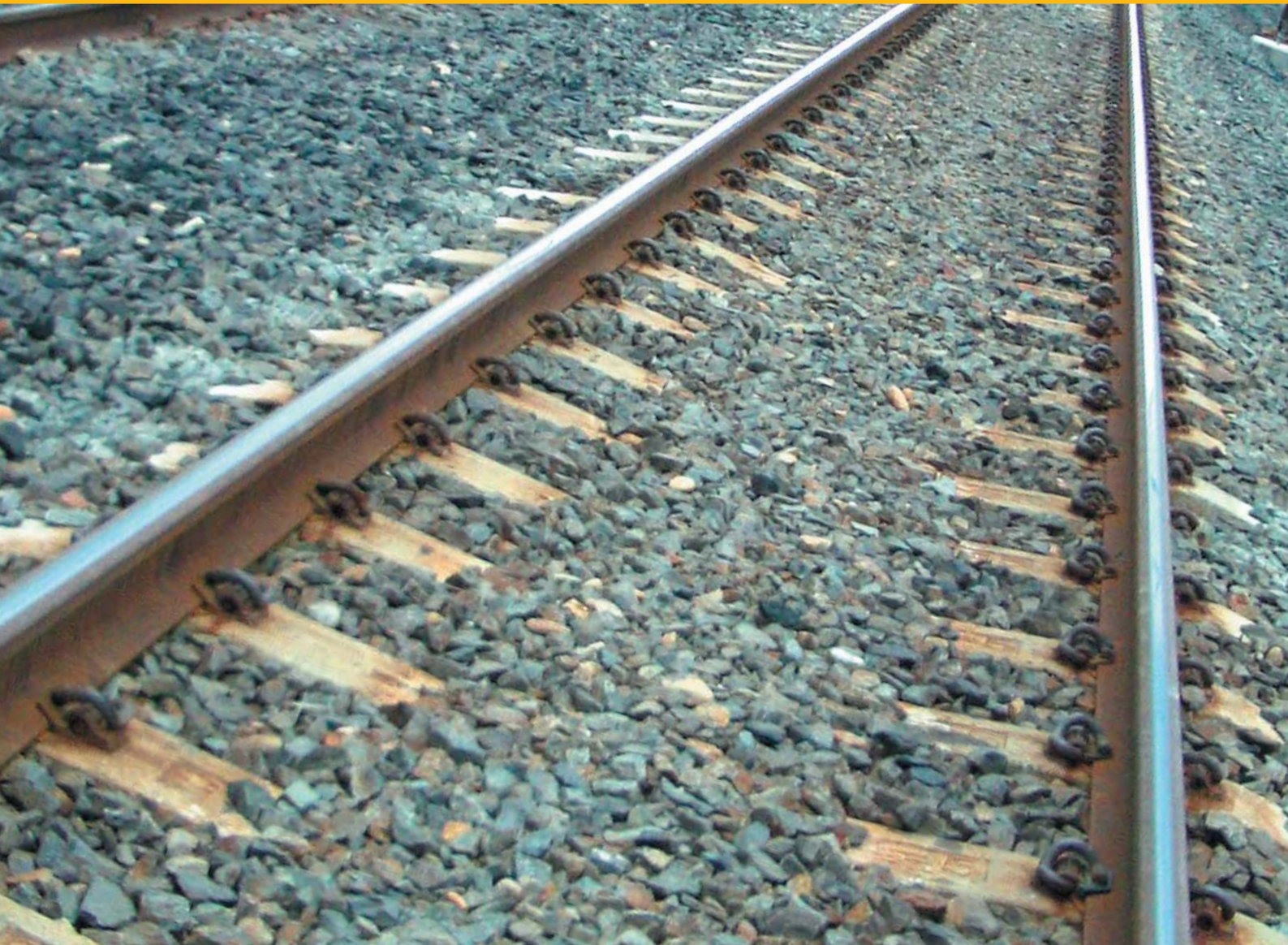
INDEPENDENT
TRANSPORT
SAFETY AND
RELIABILITY
REGULATOR

safe and reliable transport services for new south wales



IMPLEMENTATION OF THE NSW GOVERNMENT'S RESPONSE to the Final Report of the Special Commission of Inquiry into the Waterfall Accident

Reporting Period: October - December 2005



ITSRR Quarterly Report Four