



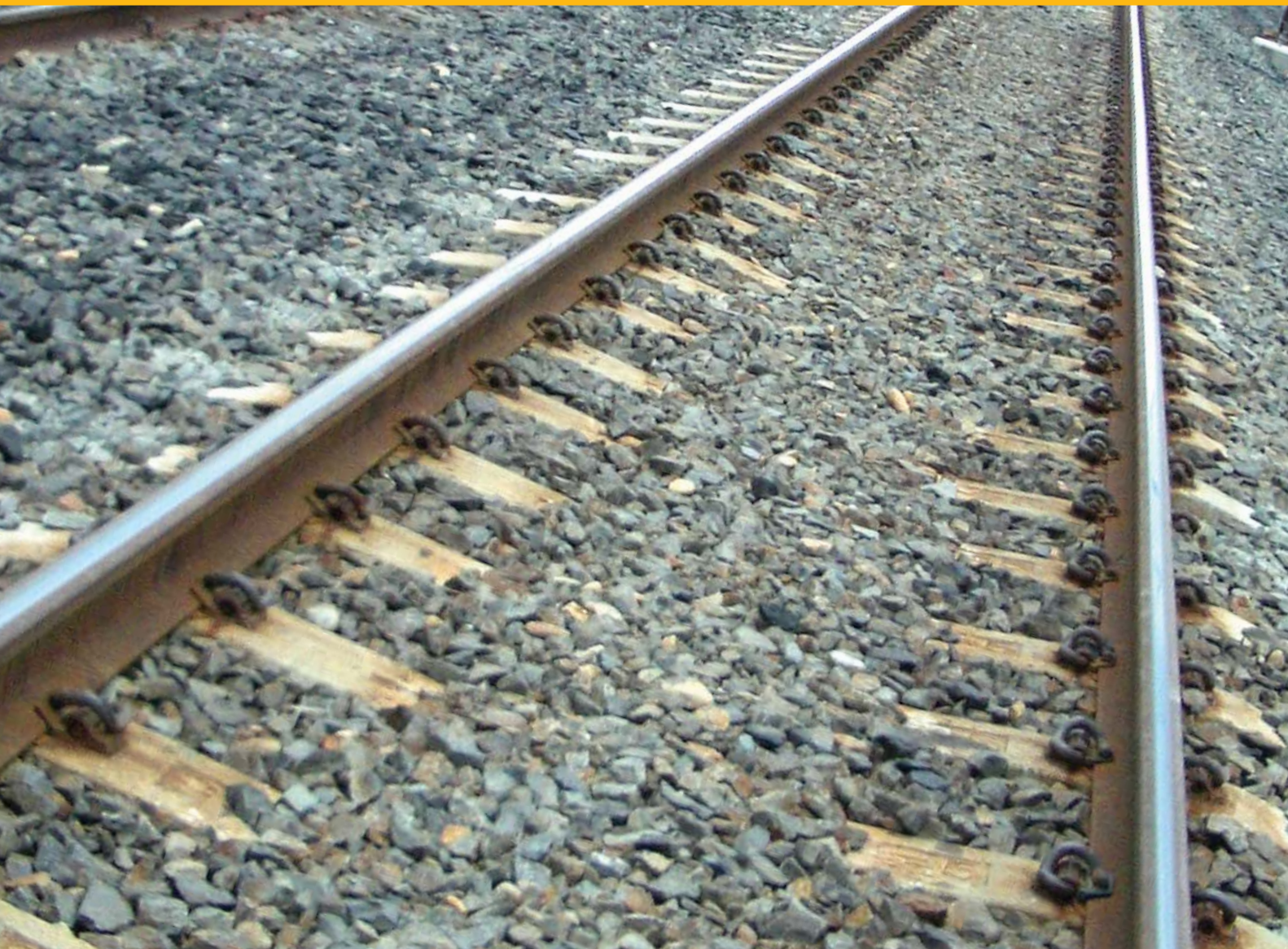
INDEPENDENT  
TRANSPORT  
SAFETY AND  
RELIABILITY  
REGULATOR

*safe and reliable transport services for new south wales*



# IMPLEMENTATION OF THE NSW GOVERNMENT'S RESPONSE to the Final Report of the Special Commission of Inquiry into the Waterfall Accident

*Reporting Period: October - December 2008*



*ITSRR Quarterly Report Sixteen*