

## **EXECUTIVE SUMMARY**

The Special Commission of Inquiry (SCOI) into the Waterfall Rail Accident released its Final Report on 17 January 2005. In accordance with the Commission's recommendations, the NSW Government agreed that the Independent Transport Safety and Reliability Regulator (ITSRR) should report quarterly on implementation progress. This is the seventeenth Quarterly Report. It outlines progress made between 1 January and 31 March 2009.

### **Implementation Summary**

During the reporting period further implementation progress was made on the following recommendations:

- RailCorp's tender process for the procurement of its digital train radio system (GSM-R) closed and evaluating the tenders began. This recommendation is scheduled for completion by 31 December 2012 when full implementation of a new digital train radio system for the RailCorp fleet is expected (Recommendation 38).
  
- The Australasian Railway Association (ARA) advised that Stage 1 of its Australian Network Rules and Procedures (ANRP) Project was completed, with the publication of the first of two National Rule Books. The rule book provides agreed national rules for people working on the railway.

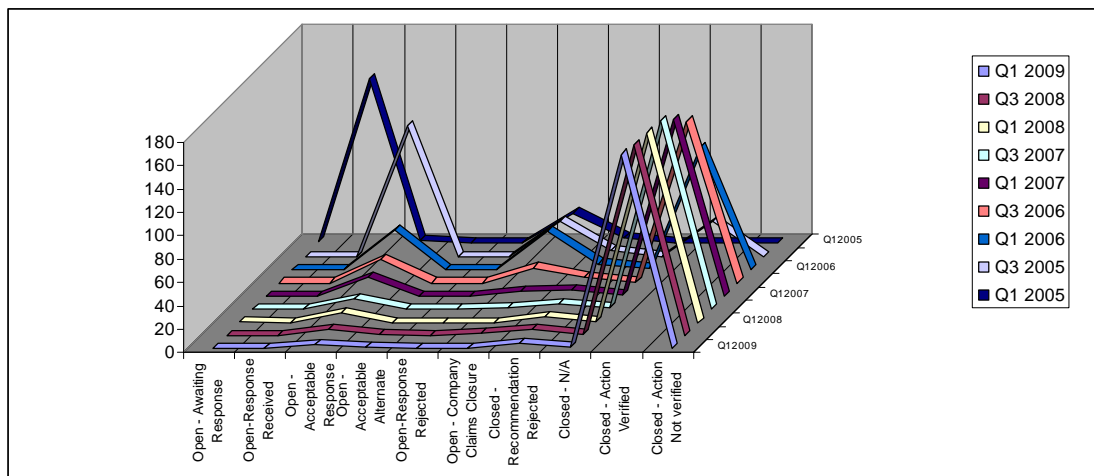
The ARA has noted that the second stage will address rules and procedures associated with operating trains on the network and is scheduled for approval in March 2010 (Recommendation 43).

At the end of the reporting period, the cumulative implementation progress to date for all 177 recommendations (including 127 recommendations and 50 sub-elements) was as follows:

- 172 (97%) recommendations verified and closed
- 2 recommendations open acceptable response (Recommendation 32 & 38)
- 1 recommendation open acceptable alternative response (Recommendation 43)
- 2 recommendations referred to the NTC have interim target dates (Recommendations 36 & 37).

The current status of all of the safety actions, compared to that in previous quarters, is summarised below:

**GRAPH 1: PROGRESSIVE STATUS OF ALL RECOMMENDATIONS BY QUARTER**



As time has progressed the peak has shifted along the x-axis as the recommendations are closed.

## Slippage

There were no slippages during the reporting period.

## **METHODOLOGY**

This section briefly outlines the processes ITSRR has instituted to develop and monitor the Implementation Plan for the Government's response to the SCOI Final Report into the Waterfall Rail Accident. Full details of these methods can be found in Appendix 2.

### **Implementation Plan**

ITSRR reviewed the SCOI Final Report and determined the actions required to implement each recommendation (in line with the Government's response) and which company or agency has responsibility for that action. These expectations formed the basis for determining whether the response put forward by a company or agency is appropriate to meet the recommendation and/or satisfy the safety objective of the recommendation.

Responsible agencies assigned indicative timeframes for each safety action and ITSRR reviewed the appropriateness of them to ensure the timeframes were feasible and that processes were in place to adequately monitor progress as well as to give sufficient notice and justification to ITSRR for any changes to the implementation plan. Timeframes agreed with responsible companies or agencies have, to the greatest extent possible, been made realistic and achievable. Details of the Implementation Plan for outstanding recommendations and progress against the plan may be found in Appendix 3.

### **Classification System for Recommendations**

In order to provide a graduated view of progress against the Implementation Plan, ITSRR developed a classification system to indicate the relative status of each recommendation. The taxonomy for the Classification System has been drawn from accepted international practice. Appendix 1 includes tables and graphs of the current implementation status of recommendations.

## **Slippage**

In reporting slippage against the agreed timeframes in the Implementation Plan, ITSRR uses the following guide:

- If a claim for closure was expected by the conclusion of the reporting quarter but was not received then it is recorded as slippage;
- If a claim for closure is submitted to ITSRR by the end of the reporting quarter but the target date was earlier in the quarter, it will not be recorded as slippage; and
- If a revised target date for implementation was received from an agency but action will be completed within the original reporting quarter then it is not recorded as slippage. However in the event that the revised target date is not met, ITSRR will record the event as a slippage.